

Homes By Sophie

Langham Place, London W4 2QL

For Rent

£2,899 pcm - £669 pw



Summary:

- 🏠 Semi Detached Family Home
- 🏠 Gated Development
- 🏠 Off Street Parking
- 🏠 Lovely South Facing Garden
- 🏠 New Well Equipped Kitchen
- 🏠 Wood Flooring
- 🏠 Family Bathroom, En-Suite Shower Room & WC
- 🏠 Close to the River Thames
- 🏠 Viewing recommended.



www.homesbysophie.co.uk



Homes

By Sophie



Description:

A lovely 3/4 bedroom family house with 1/2 large reception rooms, family bathroom with shower over the bath, separate en-suite shower room and cloakroom.




This lovely home has been refurbished and so is offered in great condition. There are wood floors throughout. The kitchen is new and is well equipped and offer plenty of storage. The main reception room opens through French windows to the lovely south facing private garden. Upstairs you will find three bedrooms and the modern bathroom.

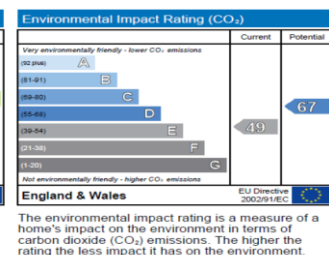
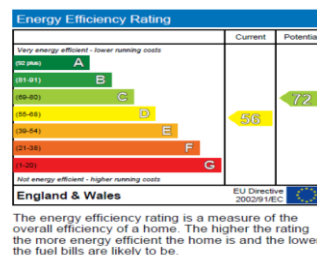
This house unusually also has an addition large reception/4th bedroom on the ground floor, so is excellently balance with regard to sleeping and reception space.

This private close is gated and is located just off the Hogarth roundabout, so is perfectly placed for access both in and out of London (A4/M4 & A316). It is also within walking distance of the High Road and the local underground stations.

Locally there is a small parade of convenient shops, swimming pool & Gym, Chiswick Secondary School and Cavendish Primary School. In addition you are moments from the River Thames and the beautiful historic Chiswick House and Grounds. This is an ideal location for a family.

Viewings are recommended to fully appreciate this lovely home.

 Freehold
 Council Tax Band F – 2016/17 £1958.34
 London Borough of Hounslow



To arrange a viewing please call 020 8797 9988 or
 Email: sophie@homesbysophie.co.uk



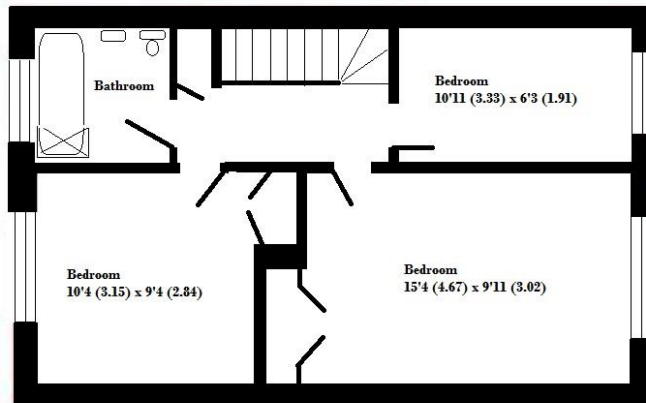
Floor Plan

Langham Place, Chiswick, London W4 2QL

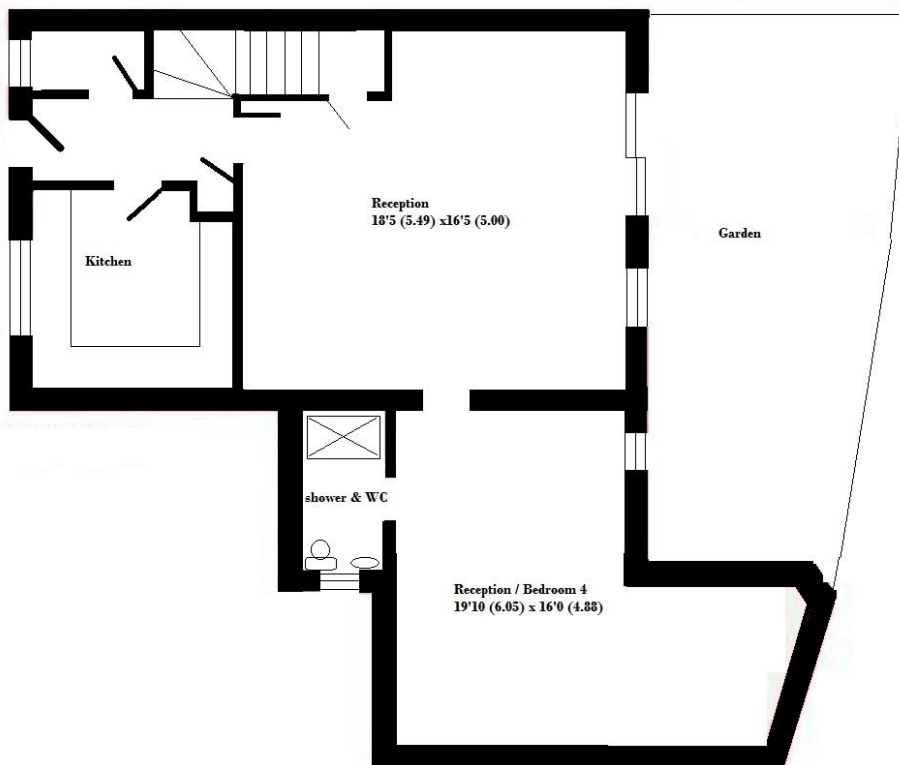
Gross Internal Floor Area 1228 sq ft / 114.1 sqm

(all measurements are approximations only)

First Floor



Ground Floor



Whilst every attempt has been made to ensure the accuracy of the floor plan contained here, measurements of doors, windows and rooms are approximate and no responsibility is taken for any error, omission or misstatement. These plans are for representation purposes only as defined by RICS Code of Measuring Practice and should be used as such by any prospective purchaser. Specifically no guarantee is given on the gross internal floor area of the property if quoted on this plan and any figure given is for initial guidance only and should not be relied on as a basis of valuation.

To arrange a viewing please call 020 8797 9988 or
Email: sophie@homesbysophie.co.uk

www.homesbysophie.co.uk

