










Homes By Sophie

CUNNINGTON STREET, W4 5EW
To Let for a Long Let - £3683.33 pcm (£850pw)



Summary:

- | | | |
|------------------------------------------------------------------------------------------------------------|---------------------------------------------------------------------------------------------------------|------------------------------------------------------------------------------------------------------------|
|  Terraced Period house |  Four bedrooms |  Two Receptions |
|  Two Bathrooms |  Private rear garden |  Wood floors |
|  Quiet Residential Road |  Furnished |  Good transport links |

A lovely period terraced family home is located in a desirable quiet residential road close to Chiswick High Road and numerous transport links.



Homes

By Sophie

Description:

This super house is in great condition throughout and offers four bedrooms, a family bathroom with shower over the bath and separate en-suite wet room; as well as two reception rooms and a large open plan kitchen / dining room to the rear, with bi fold doors opening out to the pretty private patio garden.

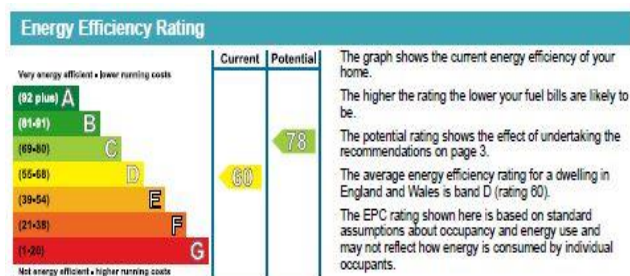
The house is laid out over three floors, including the loft conversion, which has a large double bedroom with en-suite wet room, fitted wardrobes and French windows with Juliet balcony with lovely open views over several private gardens. On the first floor is the master bedroom, which is a well-proportioned, spacious double bedroom with sash windows that looks out to the front of the house. There is a modern bathroom with shower over the bath and two smaller double/single bedrooms. One of which is currently used as a home study.

There is plenty of living space on the ground floor provided by the two separate reception rooms and the lovely big modern kitchen, which is open plan to the dining room. The pretty patio garden is accessed by the bi fold doors from the kitchen/dining room.

Despite being located in a quiet pretty residential road, it is surprisingly convenient for the Underground station at Chiswick Park and the Overground station at South Acton. Plus Chiswick High Road can be reached within minutes because of the pedestrian walkway under the railway lines by Hardwick Road. Parking is available outside the house with a resident's permit and it also has a small convenience shop close by.

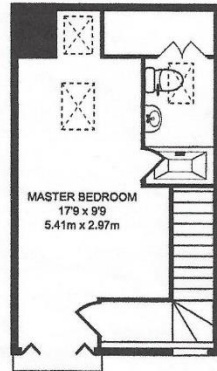
This lovely home is offered for a long let and viewings are recommended to fully appreciate this lovely house.

-  Council Tax Band E
-  London Borough of Ealing



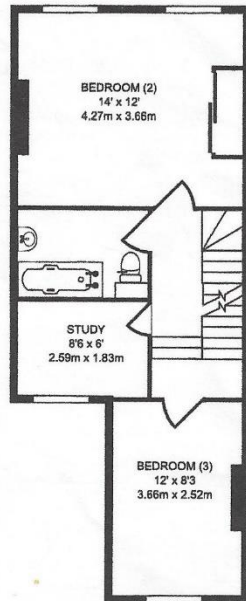
Floorplan

**Cunnington Street
Chiswick W4 5EW**



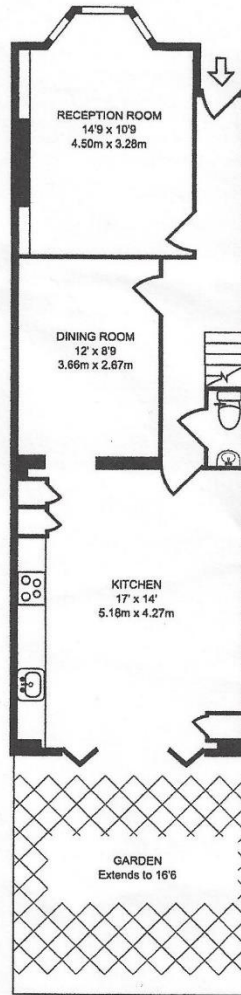
SECOND FLOOR

254 SQ FT/23.59 SQ M



FIRST FLOOR

429 SQ FT/39.88 SQ M



GROUND FLOOR

599 SQ FT/55.67 SQ M



Whilst every attempt has been made to ensure the accuracy of the floor plan contained here, measurements of doors, windows and rooms are approximate and no responsibility is taken for any error, omission or misstatement. These plans are for representation purposes only as defined by RICS Code of Measuring Practice and should be used as such by any prospective purchaser. Specifically no guarantee is given on the total square footage of the property if quoted on this plan. Any figure given is for initial guidance only and should not be relied on as a basis of valuation.

Further photographs and details are available online: www.homesbysophie.co.uk
To arrange a viewing please call 020 8797 9988 or email sophie@homesbysophie.co.uk

